



# LMX LOCATE & MARK™

GROUND PENETRATING RADAR  
TO DETECT BOTH SHALLOW  
AND DEEP TARGETS  
SIMULTANEOUSLY

# LMX200

The premier GPR locating tool in the market today

Acquire geo-reference data, create depth slices on-site and wirelessly export all information in formatted reports.

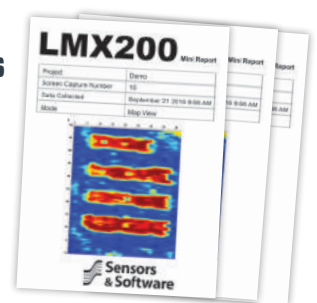


## Internal GPS

Geo-tagging targets in reports and Google Earth™

## On-site Reports

Produce instant reports from your unit. Include screen captures and line/grid/map view information



## High Resolution Touchscreen

Bright, sunlight-visible, high contrast display

## Optional External GPS

Higher resolution geo-referencing of targets for CAD and GIS

## Wi-Fi Connection

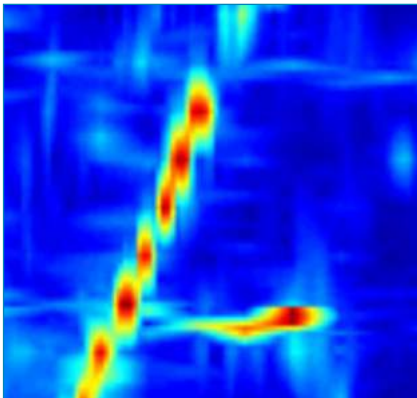
Connect to a Wi-Fi network or hotspot and instantly email a mini-report to your office or customers

# LMX200 FEATURES

## Unprecedented insights and target confidence Detect traditionally non-locatable subsurface features

Non-metallic pipes, including PVC and asbestos cement | Concrete storm and sewer systems  
Utilities where installed tracer wiring has failed | Underground storage tanks and drainage tiles  
Septic system components | Non-utility structures such as vaults, foundation walls and concrete pads

### 3D DEPTH SLICING



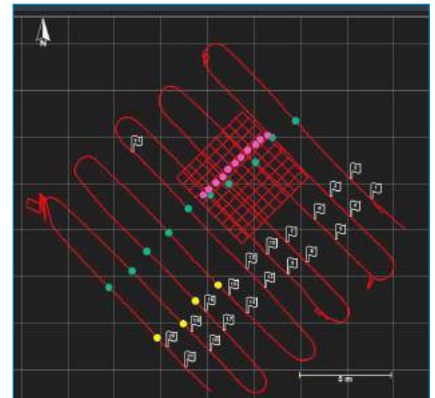
At complex sites, depth slicing reveals the orientation of pipes and cables at different depths and outlines the extent of vaults, foundations and buried tanks.

### FIELD INTERPRETATIONS



Classify targets in real time with field interpretations. Use the touchscreen to color-code each target as it is located.

### MAP VIEW ON-SITE DISPLAY



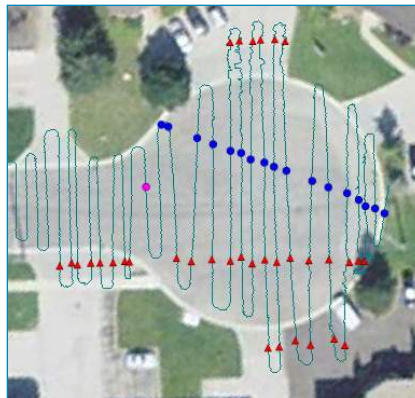
Using the optional external GPS, identified targets are displayed on the screen in a plan map view.

### SCREEN CAPTURES



At any point during the survey save screen captures of line data, map views and depth slices.

### GEO-REFERENCED OUTPUT



Display your location and targets in Google Earth™ and other similar geo-referenced platforms. Easily integrate utility locations into CAD drawings and GIS databases.

### USB DATA TRANSFER

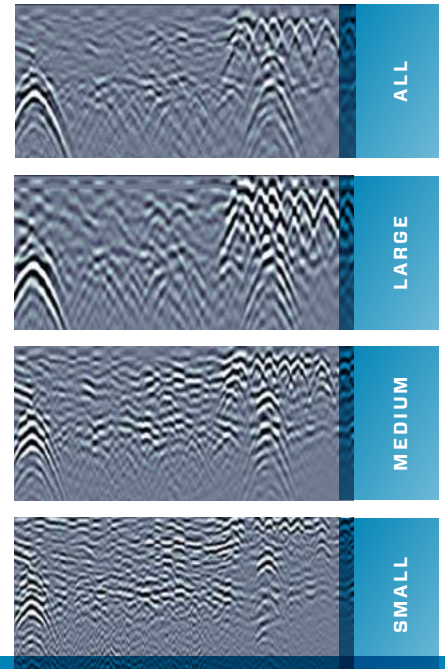


Data is saved to a memory stick for archiving and transfer to a computer.



# DYNAMIC TARGET ENHANCEMENT (DynaT)

DynaT optimizes views of small, medium and large targets. These views can be toggled, giving you unprecedented insights and target confidence.



## Specifications

	LMX100 / HR	LMX200
Data Analysis	In-field analysis	In-field analysis <b>Enhanced:</b> Post-processing analysis using EKKO_Project
Signal Enhancement	DynaQ stacking, spatial filtering	DynaQ stacking, DynaT, spatial filtering
Data Storage	>10,000 graphic data images (.jpg) (depending on external flash memory (up to 64 GB))	350 km (>200 miles) of line data in internal memory
Dimensions & Weight	<b>Size:</b> 100 × 70 × 115 cm (39.4 × 27.6 × 45.3 in) <b>Weight:</b> 22kg (48 lbs) <b>Screen Size:</b> 21 cm (8 in) diagonal <b>OPTIONAL:</b> <b>System Transport Case:</b> 81 × 74 × 51 cm (32 × 29 × 20 in) <b>Display Unit Carrying Case:</b> 34 × 30 × 14 cm (13.5 × 12 × 5 in)	
Power	1.25 A @ 12 V <b>Battery:</b> Sealed Lead Acid Gel Cell <b>Life:</b> 4-6 hrs <b>Capacity:</b> 9 Ah <b>Charger:</b> 110 - 240 V for use all over the world	
Environmental	IP65 <b>Temperature: Sensor:</b> -40°C +50°C <b>Display Unit:</b> -10°C +50°C	
Depth	Collects data to 8 m (26 ft)	

LMX100 and LMX200 are available in multiple languages

**LMX200 Enhanced provides access to digital data for advanced processing, analysis and reporting.**

**LMX200 Enhanced option includes:**

Display Unit upgrade package

EKKO\_Project software

Regulatory Specifications: Meets FCC 15.509, Industry Canada RSS-220, ETSI EN-302066

# LMX100 / LMX100HR

The simple, affordable way to locate and mark utilities in the field

Offers the perfect balance of depth penetration and high resolution for accurate locating

## Field-proof Display

Rugged, weatherproof, sunlight-visible data logger used for data acquisition, data display and processing

## Multi-language Menu

Selectable menu in more than 10 languages

## Lightweight Cart

Rugged fiberglass cart eliminates metallic structure interference

## GPR Sensor

High-resolution, ultra-wideband (UWB) GPR technology, ground coupled for maximum signal penetration

## Fully Enclosed Odometer

Enables precision data collection even in poor terrain



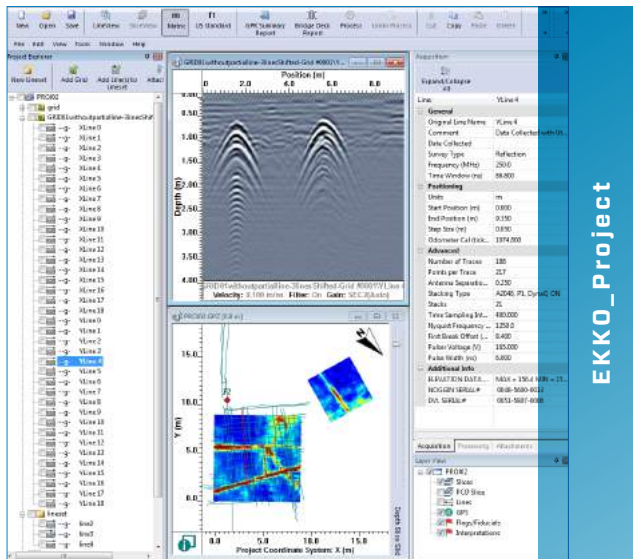
## LMX100HR High Resolution

- Touchscreen
- Markers
- Wi-fi
- Mini - reports
- Black wheels
- Internal GPS
- Geo- tagging
- Export Usage Report
- USB for data transfer
- Full collection review
- Digital hyperbola calibration

LMX100HR can be upgraded to an LMX200

# EKKO\_Project

## Advanced Reporting



Data exported from the LMX200 Enhanced system uses the EKKO\_Project software for data management, data integration and GPR data display:

MapView displays grids and GPR lines collected with GPS

Display GPR lines and save them to graphic image files such as .jpg, .bmp and .png

Display depth slices generated by processing GPR grid data. Slice up and down in depth through the data volume to reveal targets. Slice through multiple grids with different orientations simultaneously

Create impressive reports containing data images and photographs, add text and output to a PDF report

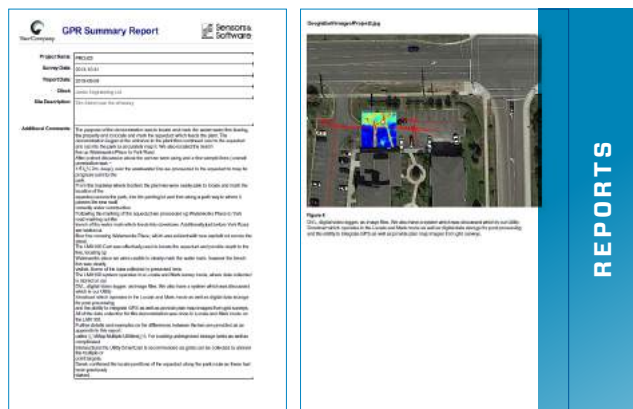
### Utility Suite

EKKO\_Project can be enhanced with the Utility Suite software for more advanced data analysis and reporting:

**LineView** module for modifying and displaying GPR lines

**SliceView** module for modifying and displaying depth slices from GPR grid data and plotting them in Google Earth™ (.kmz) files

**Interpretation** module for adding point, polyline, box and annotation interpretations to GPR lines in post-processing



Authorized Distributor:



**Sensors & Software Inc.**  
Ground Penetrating Radar (GPR) Technologies

**SALES  
TRAINING  
REPAIR & CALIBRATION**

6981 Eastgate Blvd., Lebanon, TN 37090 / T (615) 285-3952  
sales@tracerelectronicsllc.com / www.tracerelectronicsllc.com

**Subsurface  
imaging  
solutions**